

TUBES WITH COMBINATION END CLOSURES
Slit Lock Tuck Top
Preglued, Auto-Erect Bottom

**HIMES LOCK,
 AUTOMATIC BOTTOM**
**(a.k.a) CRASH LOCK,
 ECONOMY or
 POPCORN BOTTOM**

The Himes or crash lock automatic bottom is preglued in the converter's plant. It is hand erected and typically used where fast set up is critical, but production volume does not justify an investment in automatic packaging equipment.

Figure 2 shows an alternative detailing of the strip out area for heavy caliper board.

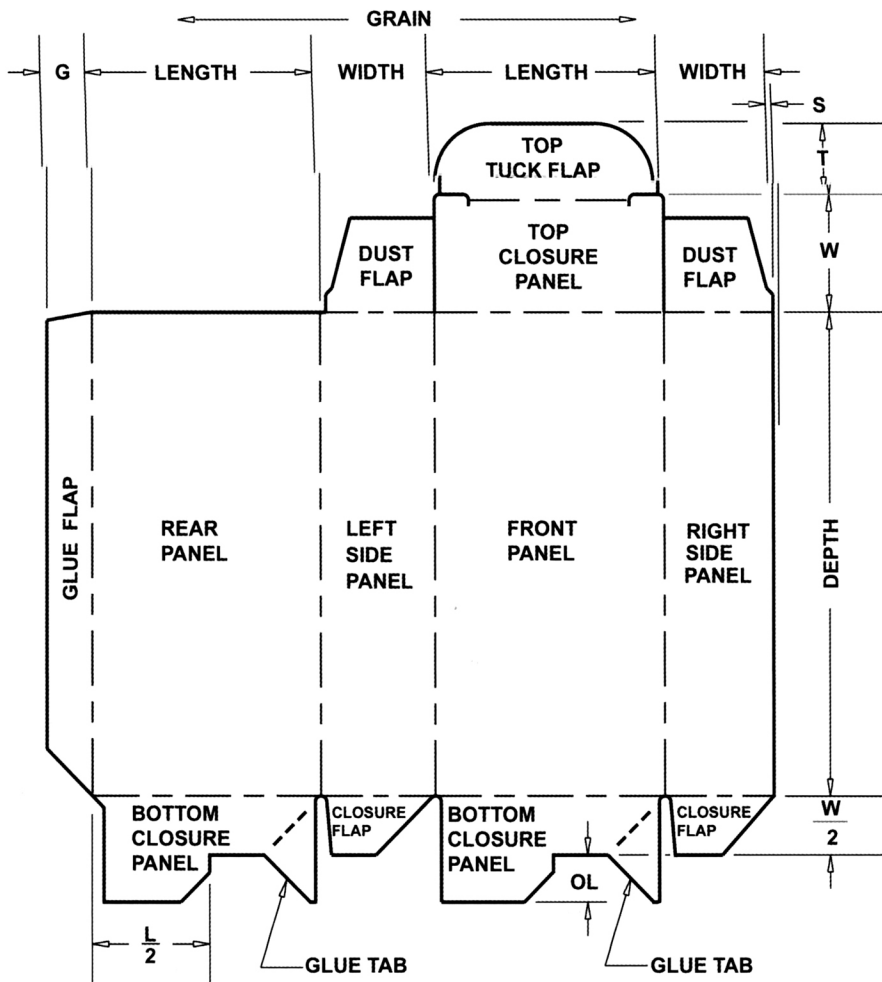


Figure 1

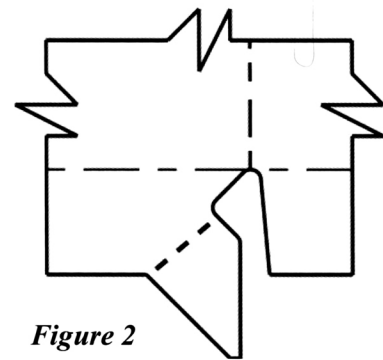


Figure 2

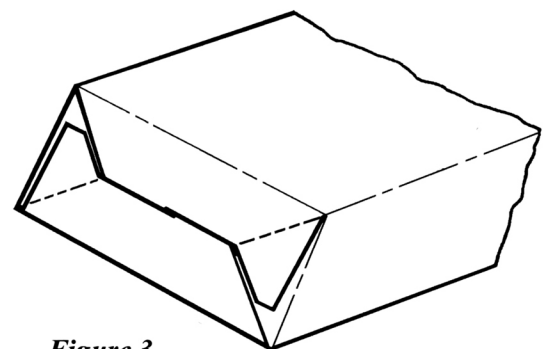


Figure 3

